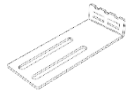


x1



x1



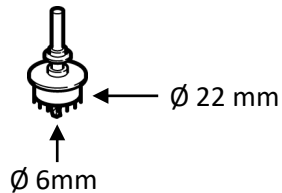
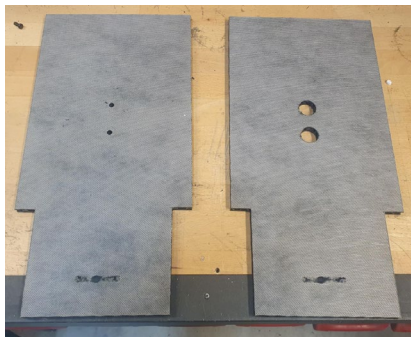
x4



x2

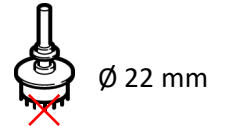
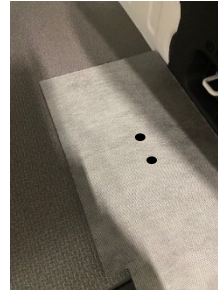
Designed for kits with the following lengths:
810 mm / 837 mm / 864 mm

1 Drill larger holes in the template using a hole saw with center drill.

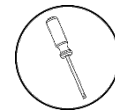


2

Position the template in the vehicle, remove the center drill and drill carefully down to the honeycomb.



3



Remove plastic parts from the drilled hole.

4



Place the spacers in the drilled holes.

5



Position the kit.

6

Remove the lashing eyelet.
Position the front bracket and secure it with two lashing eyelet bolts.
Use M6 bolts (not included) to mount it to the kit.



7

Position the rear bracket and secure it with two bolts M8x40.
Use M6 bolts (not included) to mount it to the kit.

